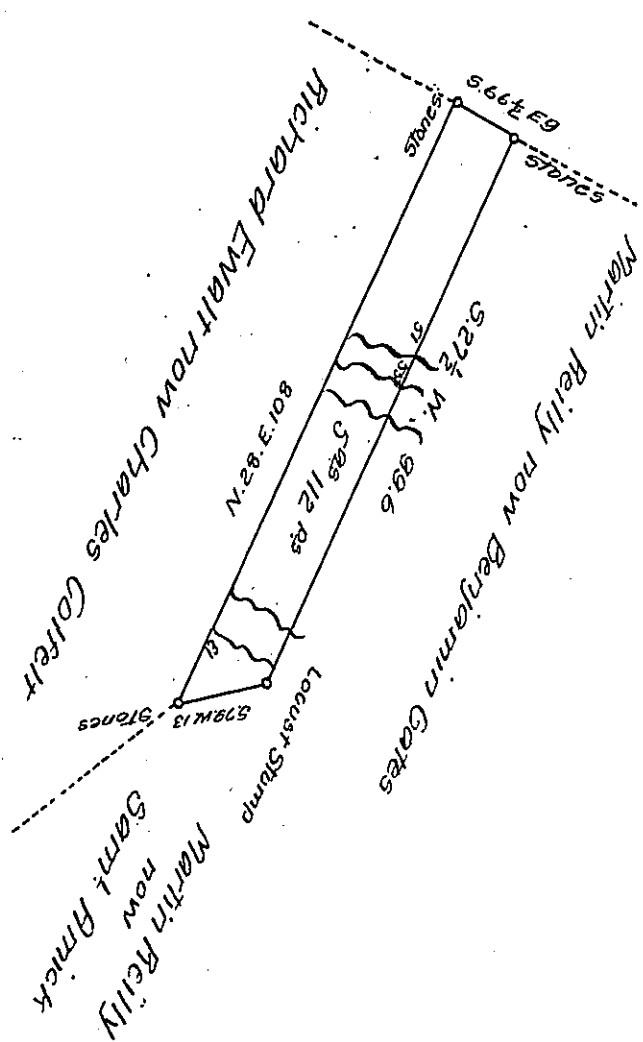


James Harris  
now  
RR Grange



Situate in Bedford Township and Bedford County, Containing  
 5<sup>20</sup> 112 P<sup>s</sup> And the usual allowance of six per cent for Roads  
 &c. Surveyed the 21<sup>st</sup> day of Sept. 1859 in pursuance of a  
 Warrant granted to O.E. Shannon dated the 10<sup>th</sup> day of Sep<sup>r</sup>  
 1859 True Bearings.

Sam<sup>l</sup> Ketterman C.S.

To John Rowe Esq<sup>r</sup>  
S.G.

IN TESTIMONY that the above is a copy of the original remaining on file in  
 the Department of Internal Affairs of Pennsylvania, made  
 conformably to an Act of Assembly approved the 16th day of  
 February 1833, I have hereunto set my hand and caused  
 the Seal of said Department to be affixed at Harrisburg,  
 this fourteenth day of October 1907

*Henry Howell*  
 Secretary of Internal Affairs.